

HVLP 3800 ProComp™, Huarun 3800 ProComp™, and 4900 ProComp™ Turbine Sprayers

309907P

Models 246857, 249524, and 249590

6 psi (41 MPa, 0.4 bar) Maximum Working Pressure



Important Safety Instructions

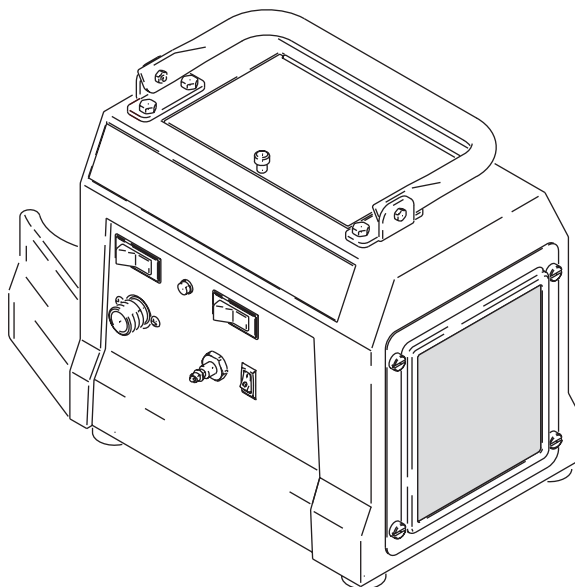
Read all warnings and instructions in this manual.
Save these instructions.

Model 249768

8 psi (55 kPa, .5 bar) Maximum Working Pressure

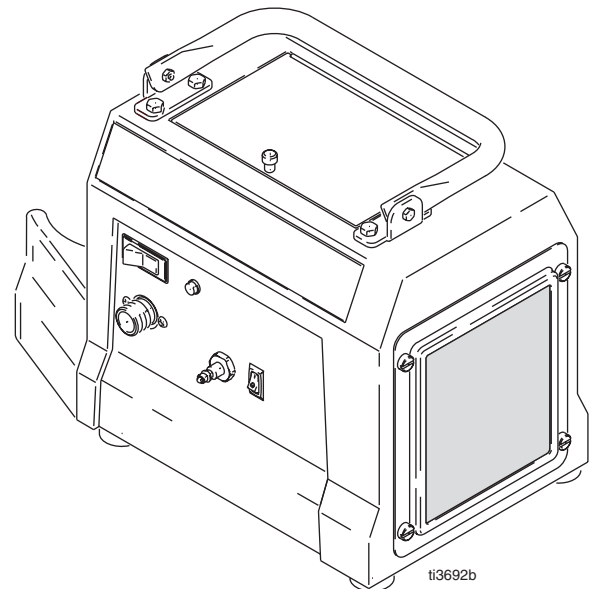
Related Manuals:

[309205](#) - HVLP Turbine Gun



4900 HVLP ProComp

TI0875



ti3692b

3800 HVLP ProComp


PROVEN QUALITY. LEADING TECHNOLOGY.

Table of Contents

Table of Contents	2
Manual Conventions	2
Warnings	2
General Information	4
Component Identification	5
Setup	6
Maintenance	10
Troubleshooting	11
Repair	12
Notes	15
Parts	16
Parts List	17
Accessories	18
Specifications	19
Graco Standard Warranty	20






Manual Conventions




The following are general Warnings related to the safe setup, use, maintenance and repair of this equipment. Additional, more specific warnings may be found throughout the text of this manual where applicable.

 WARNING
This symbol alerts you to the possibility of serious injury or death if you do not follow the instructions.

CAUTION
Alerts you to the possibility of damage or destruction of equipment if you do not follow the instructions.

Warnings

	WARNINGS
	<p>FIRE AND EXPLOSION HAZARD</p> <p>Flammable fumes, such as solvent and paint fumes, in work area can ignite or explode. To help prevent fire and explosion:</p> <ul style="list-style-type: none"> • Use equipment only in well ventilated area. • When flammable liquid is sprayed or used for flushing or cleaning, keep sprayer at least 20 feet (6 m) away from explosive vapors. • Eliminate all ignition sources; such as pilot lights, cigarettes, portable electric lamps, and plastic drop cloths (potential static arc). • Keep work area free of debris, including solvent, rags and gasoline. • Do not plug or unplug power cords, or turn power or light switches on or off when flammable fumes are present. • Ground equipment and conductive objects in work area. See Grounding instructions. • If there is static sparking or you feel a shock, stop operation immediately. Do not use equipment until you identify and correct the problem.
	<p>ELECTRIC SHOCK HAZARD</p> <p>Improper grounding, setup, or usage of the system can cause electric shock.</p> <ul style="list-style-type: none"> • Turn off and disconnect power cord before servicing equipment. • Use only grounded electrical outlets. • Use only 3-wire extension cords. • Ensure ground prongs are intact on sprayer and extension cords.
	<p>TOXIC FLUID OR FUMES HAZARD</p> <p>Toxic fluids or fumes can cause serious injury or death if splashed in the eyes or on skin, inhaled, or swallowed.</p> <ul style="list-style-type: none"> • Read MSDS's to know the specific hazards of the fluids you are using. <p>Store hazardous fluid in approved containers, and dispose of it according to applicable guidelines.</p>
	<p>EQUIPMENT MISUSE HAZARD</p> <p>Misuse can cause death or serious injury.</p> <ul style="list-style-type: none"> • Do not exceed the maximum working pressure or temperature rating of the lowest rated system component. See Technical Data in all equipment manuals. • Use fluids and solvents that are compatible with equipment wetted parts. See Technical Data in all equipment manuals. Read fluid and solvent manufacturer's warnings. • Check equipment daily. Repair or replace worn or damaged parts immediately. • Do not alter or modify equipment. • For professional use only. • Use equipment only for its intended purpose. Call your Graco distributor for information. • Route hoses and cables away from traffic areas, sharp edges, moving parts, and hot surfaces. • Do not use hoses to pull equipment. • Comply with all applicable safety regulations.

	WARNINGS
	<p>PRESSURIZED ALUMINUM PARTS HAZARD</p> <p>Do not use 1,1,1-trichloroethane, methylene chloride, other halogenated hydrocarbon solvents or fluids containing such solvents in pressurized aluminum equipment. Such use can cause serious chemical reaction and equipment rupture, and result in death, serious injury, and property damage.</p>
	<p>PERSONAL PROTECTIVE EQUIPMENT</p> <p>You must wear appropriate protective equipment when operating, servicing, or when in the operating area of the equipment to help protect you from serious injury, including eye injury, inhalation of toxic fumes, burns, and hearing loss. This equipment includes but is not limited to:</p> <ul style="list-style-type: none">• Protective eyewear• Clothing and respirator as recommended by the fluid and solvent manufacturer• Gloves• Hearing protection

General Information

ProComp Turbine Sprayers

The 3800 ProComp turbine, compressor and spray gun can spray most coatings or finishes currently being used for automotive refinish, industrial, aerospace, marine, wood, plastic, and architectural applications.

To produce high-quality paint finishes, the spray gun typically utilizes inbound air pressure of 6 psi (0.4 bar, 41 MPa) for the HVLP 3800 ProComp and 8 psi (.5bar 55 KPa) for the HVLP 4900 ProComp. A cone of air, produced by the gun, carries and directs the paint from the gun to the surface, minimizing overspray and increasing transfer efficiency. This enables painters to comply with new, clean air laws that are designed to reduce VOC (volatile organic compounds) emissions, eases paint application by requiring fewer paint passes to obtain coverage and saves on both material and clean-up time.

See HVLP-Turbine Gun manual [309205](#) (310750 Korean) for more information on the operation and use of the turbine spray gun.

Unpacking Turbine

Unpack the Graco Turbine Sprayer from the shipping carton. Inspect for any possible shipping damage. If there is any damage, call your distributor.

ProComp Turbine Configuration

The Graco 3800 ProComp is a three-stage turbine sprayer. The Graco 4900 ProComp is a four-stage turbine sprayer.

3800 ProComp Turbine Component Table

System	Model	2-qt Remote Pressure Pot	30-ft (9 m) Turbine Air Hose 30-ft (9 m) Compressor Air Hose	Gun/Fluid Set	Extra Fluid Sets
HVLP 3800 Pro-Comp Nippon 3800	246857 249590	287819	241413 240071	244118 non-bleeder style pressure fed bun with 244124 (#3)	244125 (#4) 244126 (#5)
Huarun 3800 ProComp	249524	287819	241413 240071	244118 non-bleeder style pressure fed bun with 244124 (#3)	287752 (0.5 mm, #2)
4900 ProComp	249768	287300	241413 240071	244118	287752 (0.5 mm, #2)

Component Identification

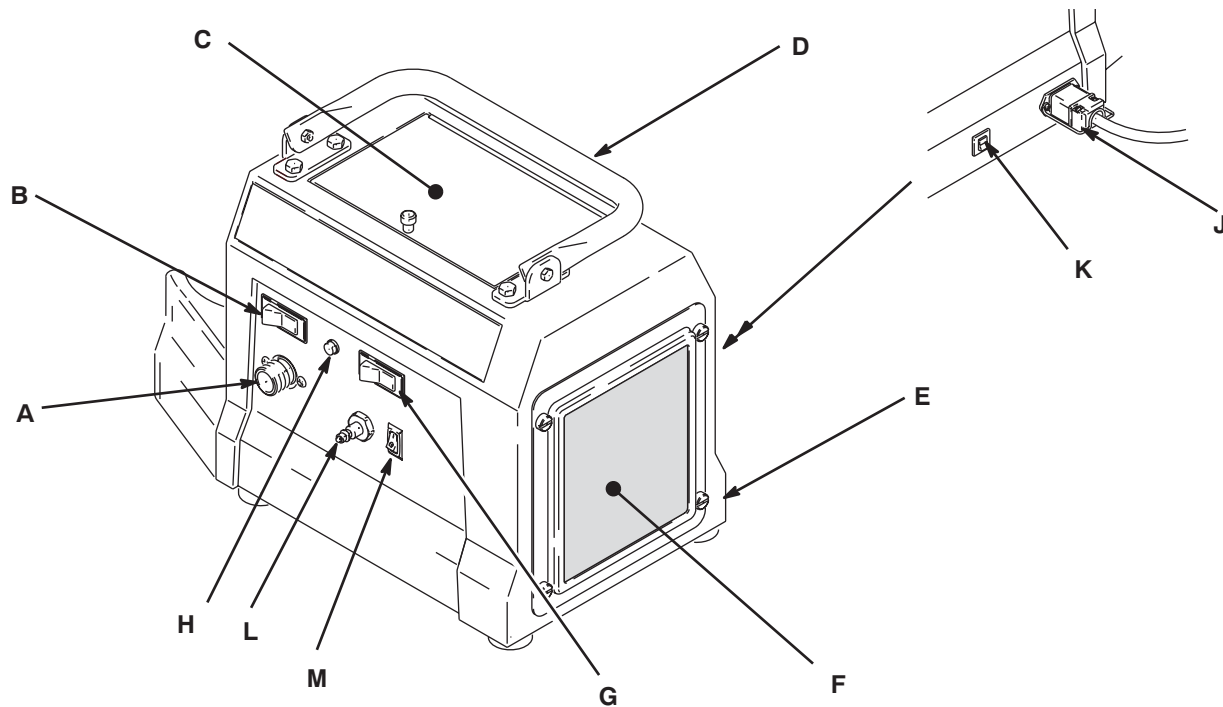


FIG. 1

T10876

FN	Item	Description
A	Turbine air outlet	Connection for turbine air supply to HVLP-turbine Gun (HVLP 4900 ProComp units include quick connector)
B	Turbine power switch	On/Off switch for sprayer turbine
C	Storage compartment	Provides storage for fluid set components
D	Turbine handle	Folds flat for minimum storage space
E	Turbine cover	Houses air filter and provides dual air flow to motor and turbine
F	Air filters (pre-filter and main)	Provides filtered air for turbine spray gun and turbine motor
G	Two-speed switch	Allows two-speed operation of turbine sprayer motor (used on HVLP 4900 ProComp™ units)
H	Air filter indicator light	Indicates air filter performance and maintenance
J	Connector and power cord	Provides power for turbine sprayer (power cord provided with turbine)
K	Resettable circuit breaker	Provides protection for turbine motor
L	Compressor air outlet	Connection for compressor air supply to 2-quart remote pressure pot
M	Compressor power switch	On/Off switch for compressor

Setup

Grounding and Electric Requirements



This equipment requires a 220V AC, 50 Hz, 8A circuit, with a grounding receptacle.

Do not alter the ground prong or use an adapter.

Use 3-wire, 12 AWG, 50 ft (15 m) or short, extension cords with ground prong.

Setup/Use Options

Turbine sprayers have a variety of user options. Fig. 2.

Fluid Preparation

- Always strain fluid before you spray. This includes color, reducers and hardeners, if used.

- When using a turbine spray system, use a slower drying reducer or thinner to compensate for the faster drying time caused by the warm air of the turbine. Do not over reduce!

CAUTION
Turbine sprayer performance varies with the viscosity of the material sprayed and the length of the hose.
To prevent pressure drop, use a short hose.

Paint Reduction

Automotive Finishes

Reduce and catalyze all paint to manufacturer's specifications. To compensate for the faster drying time of turbine systems, use a reducer that is one step slower than what is used for conventional air spray.

Industrial or Domestic Coatings

Reduce and catalyze all paint to manufacturer's specifications. If no reductions are given, first thoroughly mix fluid to be sprayed. Then, gradually mix in the proper reducer, testing the fluid until you have the correct spraying consistency.

To test the consistency, remove the stir stick from the thinned paint. When the paint stream running off the stir stick breaks into droplets, the first few drops should be about one second apart.

Connect Fluid and Air Supply

Connect Fluid and Air Supply (Fig. 2)

- The Cart/Compressor provides the air supply for the remote pressure pot.
 - Circled letters indicate hose line connections.
- 1 Connect gun air supply hose (A) between turbine air outlet (B) and gun air inlet (C). DO NOT use wrench to tighten connections; hand tighten only.
 - 2 If using a spray gun cup (D): Connect cup to gun fluid inlet (E).

If using accessory remote pressure pots (F): Connect fluid supply hose (G) between remote pressure pot fluid outlet (H) and gun fluid inlet (E), or connect pressure pot air hose (J) between pressure pot air regulator inlet (K) and the cart compressor air outlet (L).

Connect to Electric Supply

Plug turbine power cord into grounded outlet. Grounding and Electric Requirements, page 7.

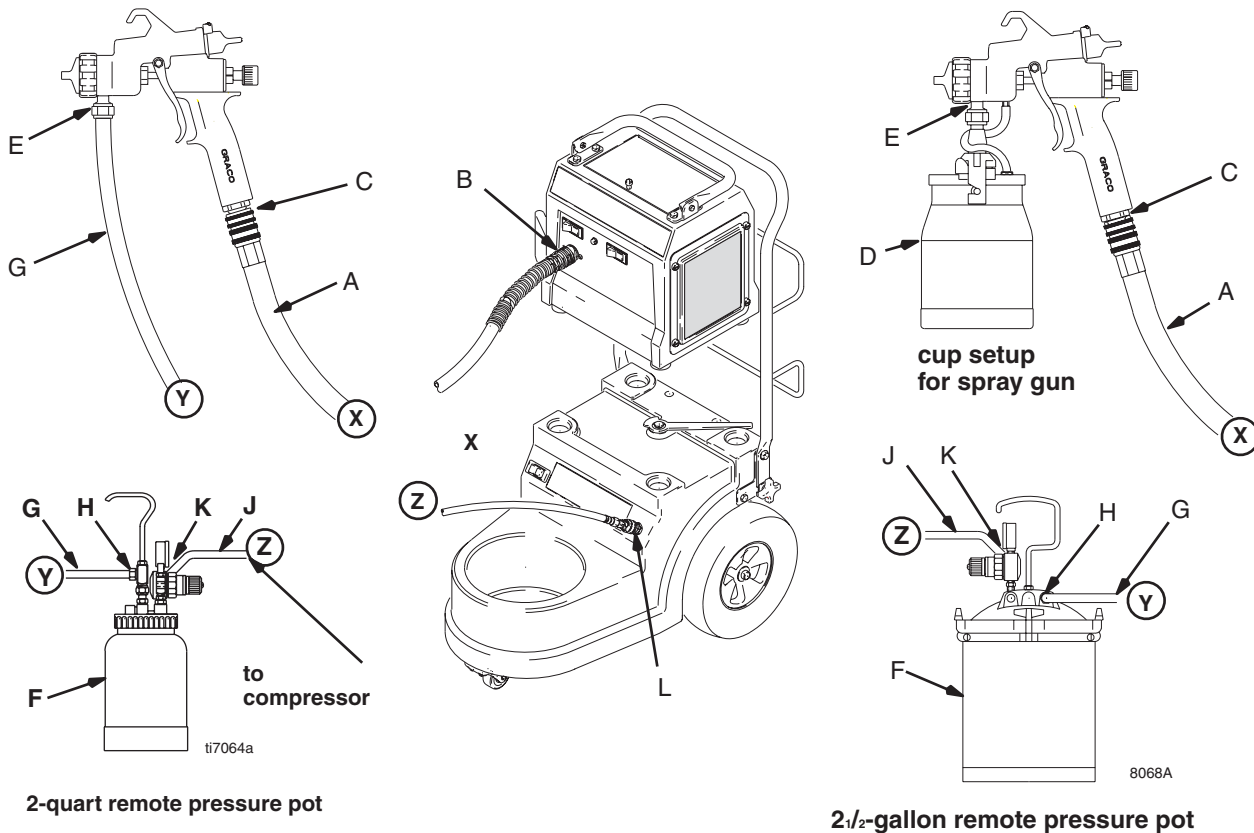


FIG. 2

Pressure Relief Procedure

WARNING

The accessory remote pressure pot remains pressurized until pressure is manually relieved. To reduce the risk of serious injury from pressurized fluid or accidental spray from gun, always **relieve pressure** in the pressure pot before loosening or removing the cover. Also, **relieve pressure** if the fluid nozzle clogs; and before cleaning, checking or servicing equipment.

- 1 Turn off air supply to pressure pot or gun
- 2 Turn off turbine sprayer.
- 3 **Remote Pressure Pot:** Turn **out** pressure relief knob (113) one turn. Wait until pressure is completely relieved before removing cover. Close knob.

Spray Gun Cup:

Note: Elevate spray gun and pull trigger. This will allow fluid in hose to drain back into remote pressure pot.

- a. Unlatch cup cover; loosen or remove cup from cover to relieve pressure.
- b. Clean spray gun and cup as instructed in HVLP-Turbine Gun manual 309205 (310750 Korean)

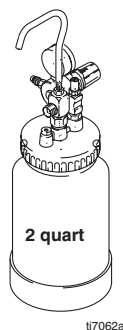


FIG. 3

Accessory Remote Pressure Pot

- 1 Follow Pressure Relief Procedure, page 9.
- 2 Remove pressure pot cover and fill. Secure cover.

Note: Lightly coat cover threads with petroleum jelly.

CAUTION

If the 2-quart remote pressure pot is accidentally tipped over or held at too great of an angle, fluid may leak into air regulator and cause damage. Take precautions to avoid this. If fluid does get into regulator, clean immediately.

CAUTION

Only hand-tighten pressure pot cover. Excessive tightening may damage cover gasket.

Note: Always spray with the least amount of pot pressure required to provide the desired spray pattern and rate of application, typically 10 psi. Spraying at pot pressures higher than necessary wastes paint and can result in an orange peel finish.

Fill Cup or Remote Pressure Pot

Spray Gun Cup

WARNING

The spray gun cup is pressurized by the gun's air supply. To reduce the risk of serious injury from pressurized fluid or accidental spray from gun, always turn off the air supply to the gun before removing the spray gun cup.

Fill cup 3/4 full to keep air pressure tube clean. Install cover. Latch the under-cup cover (H) to secure it to cup. Fig. 4. The overcup (J) has threads to secure it in place on the cup.

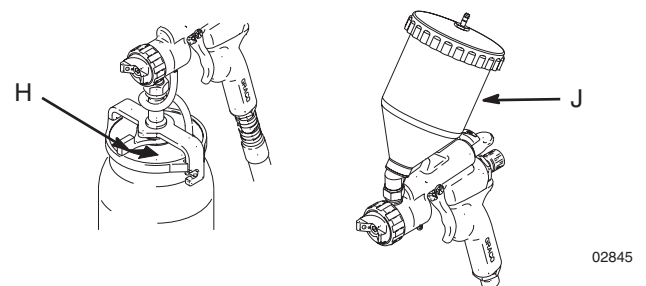





FIG. 4

Preparing the Spray Surface

To get proper adhesion, ensure surface is completely clean.

 **WARNING**

  Page 3

Sparks can be expected during normal operation of turbine motor. These sparks can ignite fumes from flammable liquids, dust particles, and other flammable substances in the spray area.

- Use additional hose if necessary, and ensure the turbine is operated in clean, dry, well ventilated area.
- Never use turbine inside spray booth!

- 1 Turn turbine On a few minutes before spraying to allow warm-up.

Note: When turbine is not in use for an extended period of time, turn it off. The turbine does not shut off automatically.

- 2 Ensure turbine filter is clean before operating. Clean filter, page 11.

Note: To adjust spray gun pattern, see HVLP-Turbine Gun manual [309205](#) (310750 Korean).

Maintenance

Daily

The turbine system is lifetime lubricated. The only maintenance required is filter cleaning and replacement.

The turbine filter must be clean at all times to provide sufficient air flow to cool the motor and atomize the fluid. Check turbine pre-filter (22) daily for cleanliness. Check main filter (21) weekly, minimum. Clean as necessary.

Note: To check filter, turn on turbine and place piece of paper against pre-filter. If air intake holds paper in place, filter is clean.

The ProComp sprayer has an air filter indicator light on the front panel. If the filter is good, the light will not illuminate. If the filter is clogged or has low airflow, the light will illuminate. Fig. 5.

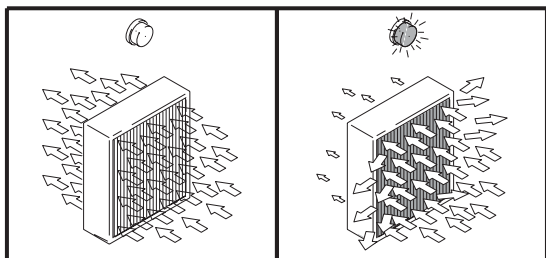


FIG. 5

Cleaning Filter


- 1 Turn off and unplug turbine.
- 2 Loosen four thumbscrews (16), remove filter retainer (15) and pre-filter (22). Fig. 6.
- 3 Remove main filter (21) and clean using one of the following methods:
 - Tap filter gently on flat surface, dirty side down.
 - Direct, compressed air (100 psi(7 bar, 70 MPa) maximum) through filter panel in the opposite direction of arrows on side of filter (from the clean side to the dirty side).

CAUTION

To prevent damage to filter, do not use compressed air on a wet filter.

- Soak filter for 15 minutes in water and mild detergent. Rinse filter until clean. Air dry.

WARNING



To avoid electric shock, never install a damp filter in the turbine. Installing a damp filter in turbine can also damage turbine.

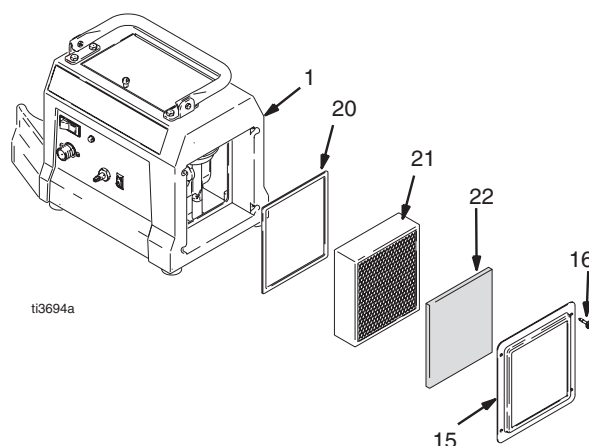


FIG. 6

Weekly

Check hose for cracks, leaks, and holes. Replace if necessary.

Annually or Every 600 Hours

(whichever comes first)

Replace motor brushes after every 600 hours of turbine sprayer operation. If brushes are not replaced, motor failure will occur.

Note: It is recommended than an authorized service center perform the motor brush replacement procedure, page 15.

Troubleshooting

Problem	Cause	Solution
No fluid delivery	No material, no remote container pressurization, hose or pickup tube clogged	Check container for material
		Check for leaks at the container gasket (2-quart pressure pot cover). Tighten cover if loose.
		Check for air flow from male quick-disconnect at compressor outlet (should be approximately 1/4 CFM).
		Turn pressure regulator clockwise. Look for pressure on gauge. (If no pressure on gauge, check air line fittings.)
		Check hole in 2-quart pressure pot cover at needle valve for blockage or dirt. Clean if necessary.
		Check for obstructions.
		Check if fluid pickup tube is loose. Tighten.
		Blow out and clear material hose.
Turbine not starting	No power	Check outlet for power. Cycle red rocker switch.
		Check that correct IEC (modular) cord is used and plugged in.
		Check circuit breaker (38). Push to reset.
Poor atomization	Dirty filter	Clean filter and replace as necessary.
	Extension cord too long	Extension cord must be 3-wire, 12 AWG, 50 ft (15 m) or shorter.
	Hose too long	Replace with shorter hose. See Accessories, page 20, for shorter hose and part no.
Circuit breaker trips	Filter clogged	Clean filter and replace as necessary
	High ambient temperature	Move turbine to cooler area.
	Excessive brush wear	Remove cover and turbine and check for free motor rotation and for brush wear. Replace motor brushes if necessary. Return to authorized service center.
	Excessive current draw	Return to authorized service center.

Repair


WARNING


To avoid injury, including electric shock turn off turbine and unplug power cord before performing and repair procedures on the turbine.

Turbine Sprayer Disassembly

(unless otherwise indicated, refer to Fig. 7 and 8)

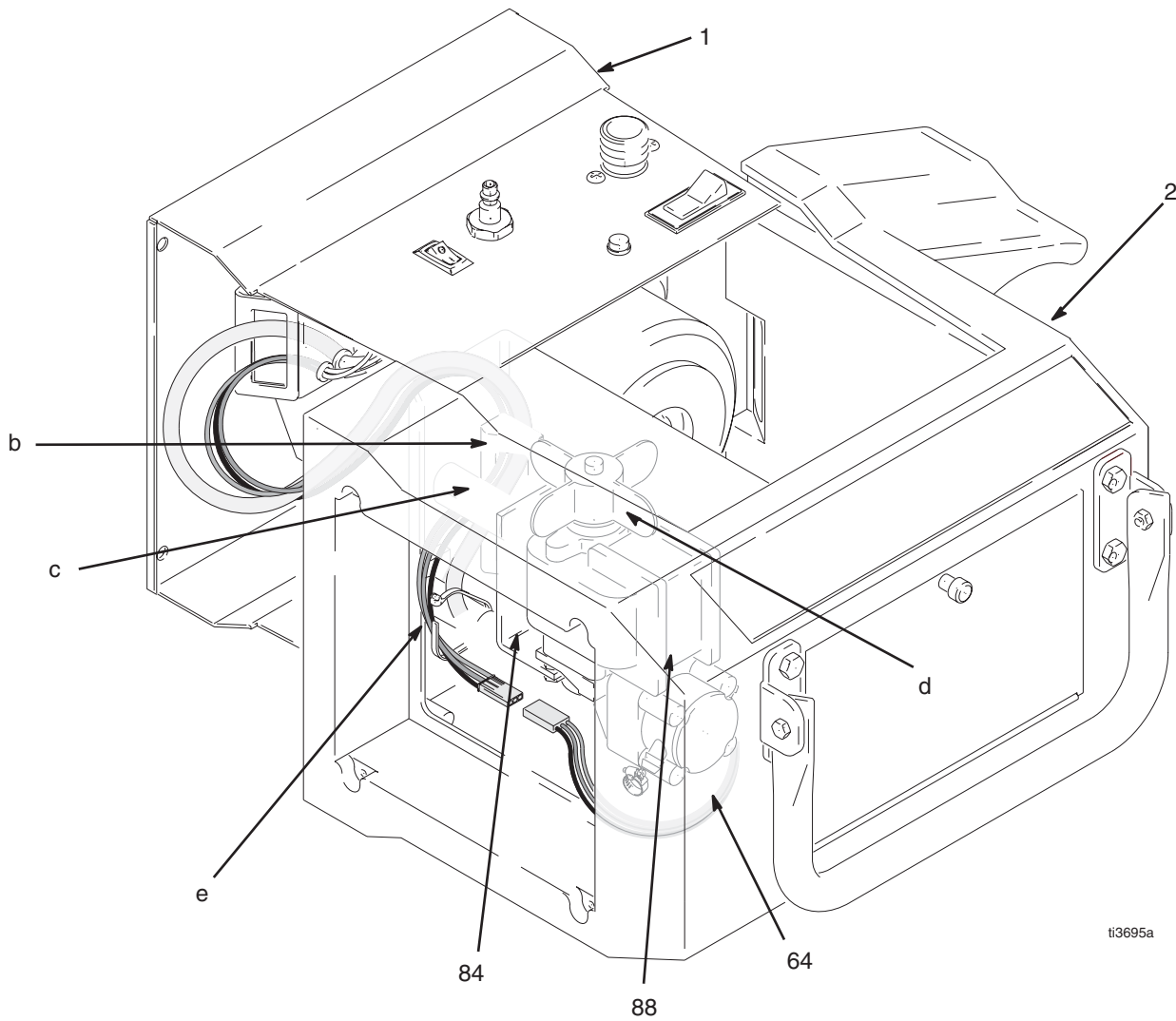
- 1 If necessary, clean and replace filter as described in Maintenance, Daily, instructions, page 11.
- 2 Loosen the four thumbscrews (16) and remove filter retainer (15), prefilter (22), and main filter (21). Parts, page 16.
- 3 Remove hose clamp (88) and disconnect air hose (84) from the “out” side of the compressor (64).
- 4 Disconnect compressor wiring harness (a) from compressor (64).
- 5 Remove four cap screws (27) and bumpers (7).
- 6 Place turbine on its back. Carefully separate turbine cover (1) from turbine base plate (2) while guiding compressor air hose (84) and wiring harness (a) through the air passage (b) in turbine cover. Place turbine base plate upright on a work surface.
- 7 Repair or replace parts as required.
- 8 After completing repair, place turbine base plate (2) on its back.
- 9 Slide turbine cover (1) on turbine base plate approximately 1-2 in. (to get it started).
- 10 Reaching between the turbine cover (1) and base plate (2) carefully guide compressor air hose (84) and wiring harness (1) through air passage (b) through compressor mounts (c) in turbine cover.
- 11 Gently pull the free ends of compressor air hose (84) and wiring harness (a) with your other hand to take up the slack.
- 12 Maintain tension on the compressor air hose (84) and wiring harness and slide the turbine cover (1) fully on the turbine base plate (2).
- 13 Replace four capscrews (27) and bumpers (7).
- 14 Reconnect compressor air hose (84) and wiring harness (a).
- 15 Reassemble filter, filter retainer, and pre-filter.

CAUTION

Keep excess tubing and wiring clear of compressor cooling fan (d) by securing to compressor mount (c) with wire tie (e).

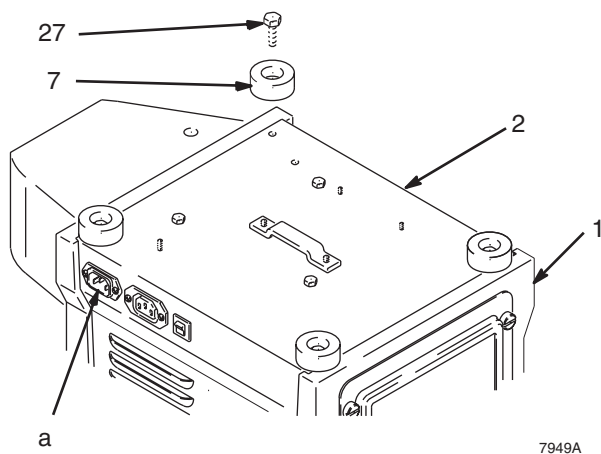
Power Cord Replacement

Replace power cord by unplugging from IEC connector (a). Install new cord. Fig. 8.



ti3695a

FIG. 7



7949A

FIG. 8

Motor Brush Replacement

Note: It is recommended that this procedure be performed by an authorized service center technician.

- 1 Follow Turbine Sprayer Disassembly procedure, page 13.
- 2 Follow Turbine/Motor Replacement, page 15.
- 3 Remove plastic fan cover.
- 4 Remove brushes. Check commutator for excessive wear.

Note: Do not install new brushes in a turbine in which the commutator has been damaged by the brush holders. A motor with this type of damage cannot be repaired.

- 5 Install new motor brushes using reverse order. Keep lead wires away from all rotating parts and motor frame.

CAUTION

Do not run motor with air inlet or outlet sealed off.

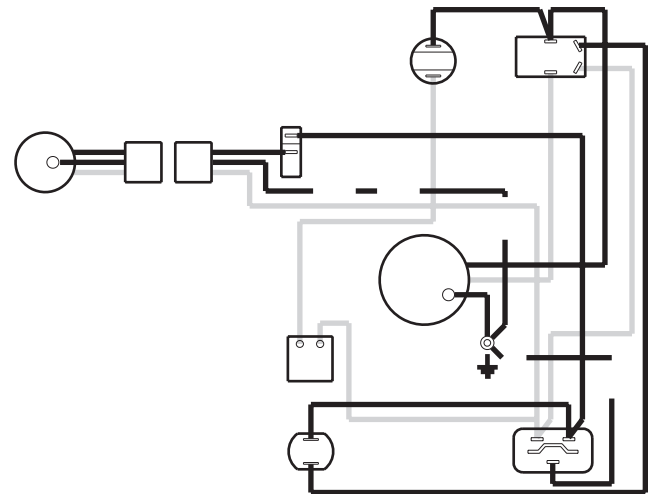
- 6 Reassemble turbine.
- 7 Run motor 30 to 45 minutes at half-rated voltage to seat motor brushes.

Note: If half-rated voltage is not available, run repaired unit in series with another turbine for 30 to 45 minutes.

Turbine/Motor Replacement

Refer to Parts Drawing, page 16.

- 1 Follow Turbine Sprayer Disassembly procedure, page 13.
- 2 Remove turbine gasket (25).
- 3 Remove 3 screws (6).
- 4 Remove plate (82) and 3 spacers (83).
- 5 Remove turbine motor wires from spade connectors.
- 6 Rotate turbine (24) from outlet fitting (18) and lift up from turbine spacers (23).
- 7 Install new turbine gaskets (25 and 41).
- 8 Reassemble turbine.
- 9 Connect ground wire to turbine housing.
- 10 Reconnect wires.



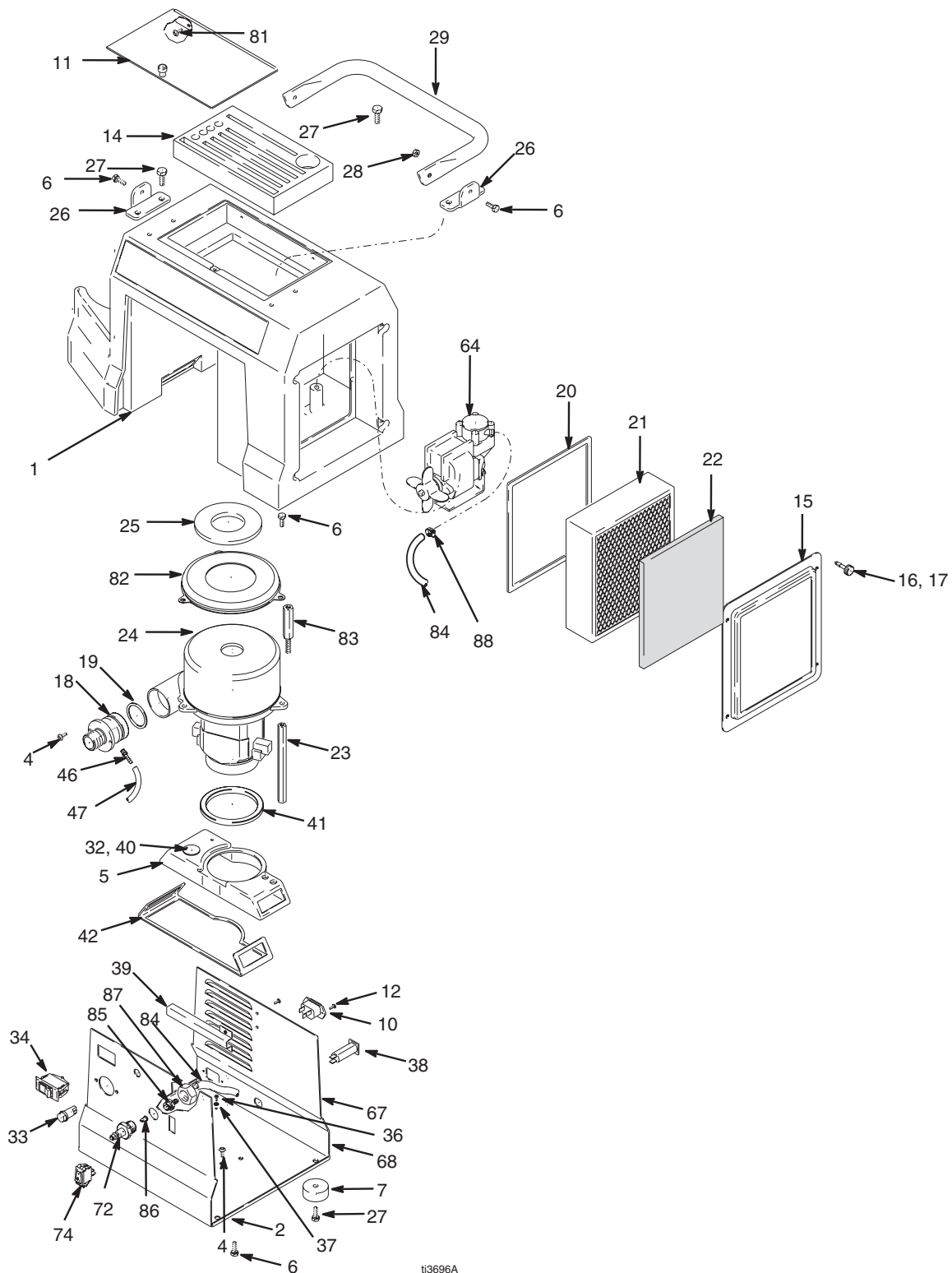
HVL P 3800 & 4900 ProComp

t10906

FIG. 9

Parts

HVLP 3800 Model 246897 and 249524



113696A

Parts List

Model 246857 and 249524

Ref No.	Part No.	Description	Qty	Ref No.	Part No.	Description	Qty
1	276666	COVER, turbine	1	51	241413	HOSE, turbine air, 30 ft (not shown)	1
2	196946	BASE PLATE, turbine	1	52	240071	HOSE, compressor, air, 30 ft (not shown)	1
4	114699	SCREW, pan hd	2	53	103473	STRAP, tie (not shown)	1
5	196982	DUCT, turbine	1	54	244124	FLUID SET, #3, Model 246857 & 249590 (not shown)	1
6	114670	SCREW, cap, hx hd	6		287752	FLUID SET, #2, 0.5 mm, Model 249524 (not shown)	
7	113817	BUMPER	4	64	287154	KIT, compressor, 220V	1
10	114064	PLUG, inlet	1	65	116281	CORD SET, jumper, IEC320, 8 ft (not shown)	1
11	244166	LID, tool box	1		195551	RETAINER, cord adapter (not shown)	2
12	114410	SCREW, pan hd, torx	4		243280	ADAPTER, cord set, 220V, global (not shown)	1
14	197054	FOAM PAD, tool box	1	66	242001	ADAPTER, cord set, European (not shown)	1
15	197057	RETAINER, filter	1	67◆	193095	LABEL, danger	1
16	192895	SCREW, captive	4	68◆	193096	LABEL, warning	1
17	158486	PACKING, o-ring	4	69◆	193126	LABEL, caution (not shown)	1
18	192779	FITTING, outlet	1	72	197152	FITTING, quick connect	1
19	156698	PACKING, o-ring	1	74	116255	SWITCH, rocker	1
20	192789	GASKET, filter	2	81	114538	SCREW, mach, pan hd	2
21	240273	FILTER, main, paper	1	82	194094	PLATE, turbine	1
22†	240274	FILTER, pre	1	83	194096	SPACER, turbine	3
23	192780	SPACER, turbine	3	84	197784	TUBE, air	1
24*	M73016	KIT, turbine, 3-stage, 220 volt	1	85	197153	FITTING, valve, barbed	1
25	192788	GASKET, turbine	1	86	244135	VALVE, duckbill	1
26	192784	BRACKET, handle	2	87	101936	NUT, jam	1
27	114531	SCREW, cap, hx hd	8	88	116767	CLAMP, hose	1
28	113414	NUT, lock	2				
29	192785	HANDLE, turbine	1				
32	114279	SENSOR, pressure	1				
33	114286	LIGHT, indicator, 220V	1				
34	114293	SWITCH, rocker, red	1				
36	111593	SCREW, grounding	1				
37	102063	WASHER, lock, external tooth	1				
38	114290	BREAKER, circuit, 8A, 220V	1				
39	192905	PLATE, deflector	1				
40	193059	GASKET, sensor	1				
41	192845	GASKET, duct	1				
42	192846	GASKET, duct	1				
46	114287	FITTING, barbed	1				
47	192810	HOSE, air	1				
50	244118	GUN, HVLP (not shown)	1				

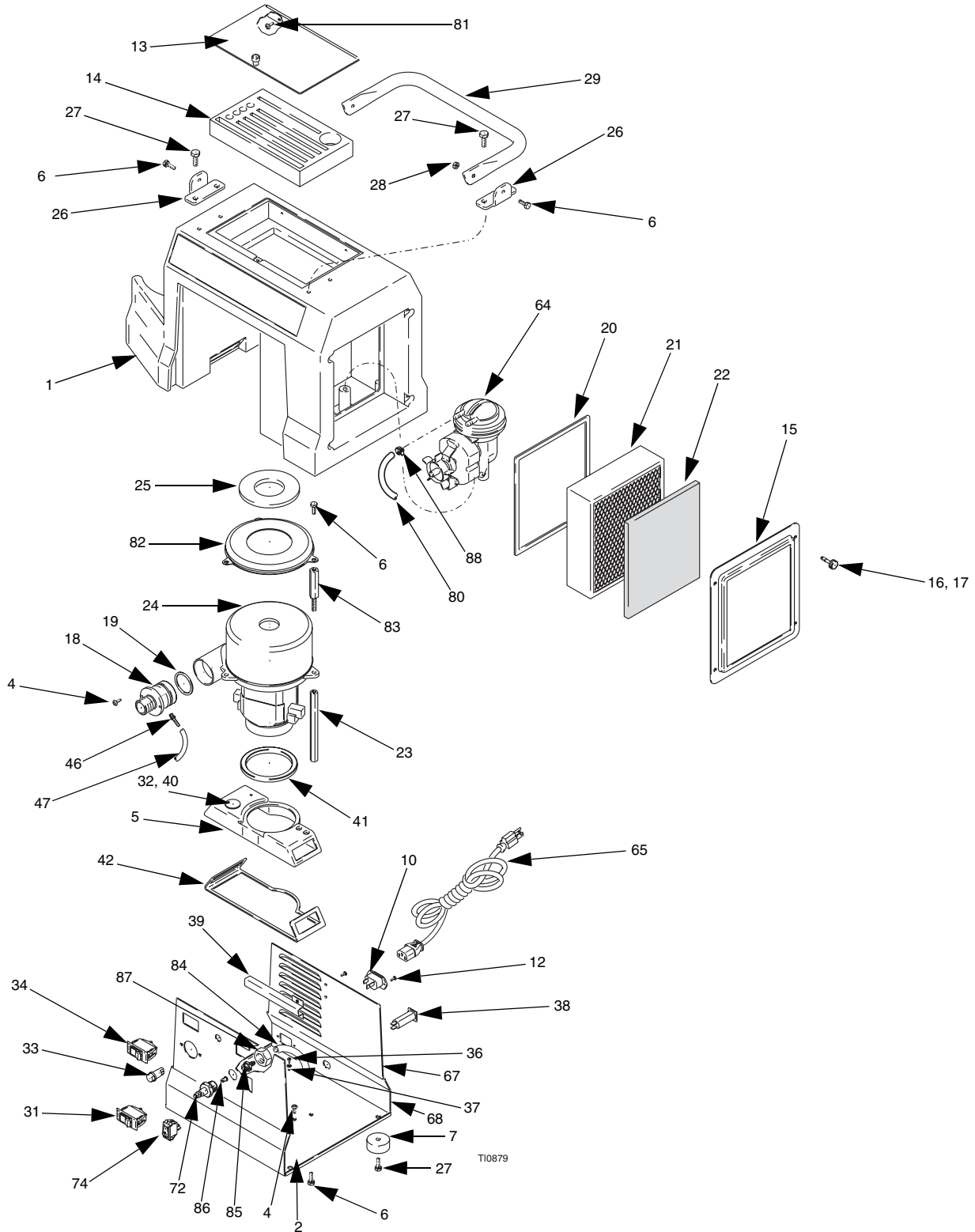
†Pre-filters are available in 5-packs. Order part no. 240274.

* Turbine Brush Kits are also available. Order part no. 240546.

◆ Extra Danger and Warning labels are available for free.

Parts Drawing

Model 249768 HVLP 4900 Procomp



Parts List

Model 249768 HVLP 4900 ProComp

Ref No.	Part No.	Description	Qty.	Ref No.	Part No.	Description	Qty.
1	276666	COVER, turbine	1	41	192845	GASKET, duct	1
2	197108	BASE PLATE, turbine (HVLP 4900)	1	42	192846	GASKET, duct	1
4	114669	SCREW, pan hd	2	46	114287	FITTING, barbed	1
5	196982	DUCT, turbine	1	47	192810	HOSE, air	1
6	114670	SCREW, cap, hx hd	6	50	244118	GUN, HVLP (not shown)	1
7	113817	BUMPER	4	51	241413	HOSE, turbine air, 30 ft (not shown)	1
10	114064	CONNECTOR, male	1	52	240071	HOSE, compressor, air, 30 ft	1
12	114410	SCREW, pan hd, torx	4	53	103473	STRAP, tie (not shown)	1
13	244166	LID, tool box	1	54	244124	FLUID SET, #3 (not shown)	1
14	197054	FOAM PAD, tool box	1	64	249879	COMPRESSOR kit, 240V	1
15	197057	RETAINER, filter	1	65	116281	CORD SET,	
16	192895	SCREW, captive	4	67▲	193095	LABEL, danger	1
17	158486	PACKING, o-ring	4	68▲	193096	LABEL, warning	1
18	192779	FITTING, outlet	1	69▲	193126	LABEL, caution (not shown)	1
19	156698	PACKING, o-ring	1	72	197152	FITTING, quick connect	1
20	192789	GASKET, filter	2	74	116255	SWITCH, rocker	1
21	240273	FILTER, main, paper	1	75	287752	.5 & #2 ACCESSORY KIT	1
22†	240274	FILTER, pre	1	80	240488	HOSE, air, 1/4 in., clear	1
23	192780	SPACER, turbine	1	81	114538	SCREW, mach, pan hd	2
24*	288391	TURBINE KIT, 4-stage; 240 volts (HVLP 4900)	1	82	194094	PLATE, turbine	1
25	192788	GASKET, turbine	1	83	194097	SPACER, turbine (HVLP 4900)	3
26	192784	BRACKET, handle	2	84	197284	TUBE, air	1
27	114531	SCREW, cap, hx hd	8	85	197153	FITTING, valve, barbed	1
28	113414	NUT, lock	2	86	244135	VALVE, duckbill	1
29	192785	HANDLE, turbine	1	87	101936	NUT, jam	1
31	114658	SWITCH, rocker (HVLP 4900)	1	88	116767	CLAMP, hose	1
32	114279	SENSOR, pressure	1				
33	114286	LIGHT, indicator 240V	1				
34	114293	SWITCH, rocker, red	1				
36	111593	SCREW, grounding	1				
37	102063	WASHER, lock, external tooth	1				
38	114290	BREAKER, circuit; 8A, 240V	1				
39	192905	PLATE, deflector	1				
40	193059	GASKET, sensor	1				

† Pre-filters are available in 5 packs. Order Part No. 240274.

* Turbine Brush Kits are also available. Order part number 240546.

▲ Replacement Danger and Warning labels, tags, and cards are available at no cost.

Accessories

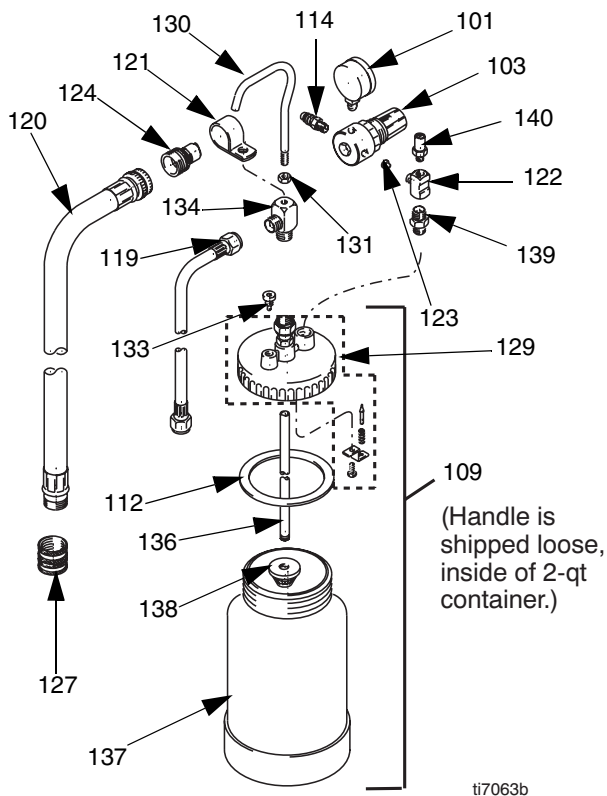
2-Quart (1.9 liter) Pressure Pot 287819

50 psi (345 MPa, 3.5 bar) Maximum Inlet Air Pressure

2-quart (1.9 liter) capacity, aluminum cup. Includes air pressure regulator, gauge, pressure relief valve and rigid hook handle.

Note:

- See HVLP Finish Systems brochure 300564 for all accessories.
- Non-Silicone Lubricant 111265 (4 oz.) is available for fluid seals and wear areas.



WARNING



Page 4.

Ref No.	Part No.	Description	Qty
101	104655	PRESSURE GAUGE	1
103	104815	PRESSURE REGULATOR	1
109	287818	POT, 2 quart (1.9 liter), aluminum	1
112	120132	GASKET	1
	287821	GASKET KIT 5-pack	1
114	169969	FITTING	1
119	240474	HOSE, fluid; 60 in. long; 1/4 in. ID	1
120	240482	HOSE, air; 54 in. (1.37 m) long	1
121	M70854	HOSE CLAMP	1
122	110440	FITTING TEE	1
123	189557	RESTRICTOR	1
124	M70399	QUICK DISCONNECT, male	1
127	M70402	QUICK DISCONNECT	1
128	120123	LID, cup	1
129	287820	VALVE KIT, check repair	1
130	120130	HANDLE	1
131	120129	NUT, handle	1
133	120127	VALVE, pressure release	1
134	120128	FITTING, outlet	1
136	120125	TUBE, fluid	1
137	120126	CUP, 2 quart	1
138	193218	STRAINER	1
139	120131	FITTING, inlet	1
140	120133	VALVE, pressure relief	1

Specifications 3800/4900

Power requirements	220V AC, 50 Hz
Amps at 220V	1 phase, 8A minimum
Power cord (extension must be 3-wire, 12 AWG, 50 ft (15 m) or shorter)	No. 12 AWG, 3-wire, 15 ft
Unrestricted air flow rate	3800 80 cfm / 4900 82 cfm
Turbine stages	3800 3 / 4900 4
Maximum turbine hose length	60 ft. (18 m)
Pressure pot volume	2 quart, (1.9 liter)
Wetted parts	
Bare spray gun	stainless steel, brass, hard-coated aluminum
Spray gun cup	aluminum, polyethylene
2-quart (1.9 liter) accessory, remote pressure pot	aluminum, brass, polyethylene
Turbine shipping weight	3800 34 lb / 4900 39 lb
Turbine diameter	5.7 in. (144.78 mm)
Sound level per ISO 3744	
Sound power level	89.0 dB(A))
Sound pressure level	78.0 dB(A)

Graco Standard Warranty

Graco warrants all equipment referenced in this document which is manufactured by Graco and bearing its name to be free from defects in material and workmanship on the date of sale to the original purchaser for use. With the exception of any special, extended, or limited warranty published by Graco, Graco will, for a period of twelve months from the date of sale, repair or replace any part of the equipment determined by Graco to be defective. This warranty applies only when the equipment is installed, operated and maintained in accordance with Graco's written recommendations.

This warranty does not cover, and Graco shall not be liable for general wear and tear, or any malfunction, damage or wear caused by faulty installation, misapplication, abrasion, corrosion, inadequate or improper maintenance, negligence, accident, tampering, or substitution of non-Graco component parts. Nor shall Graco be liable for malfunction, damage or wear caused by the incompatibility of Graco equipment with structures, accessories, equipment or materials not supplied by Graco, or the improper design, manufacture, installation, operation or maintenance of structures, accessories, equipment or materials not supplied by Graco.

This warranty is conditioned upon the prepaid return of the equipment claimed to be defective to an authorized Graco distributor for verification of the claimed defect. If the claimed defect is verified, Graco will repair or replace free of charge any defective parts. The equipment will be returned to the original purchaser transportation prepaid. If inspection of the equipment does not disclose any defect in material or workmanship, repairs will be made at a reasonable charge, which charges may include the costs of parts, labor, and transportation.

THIS WARRANTY IS EXCLUSIVE, AND IS IN LIEU OF ANY OTHER WARRANTIES, EXPRESS OR IMPLIED, INCLUDING BUT NOT LIMITED TO WARRANTY OF MERCHANTABILITY OR WARRANTY OF FITNESS FOR A PARTICULAR PURPOSE.

Graco's sole obligation and buyer's sole remedy for any breach of warranty shall be as set forth above. The buyer agrees that no other remedy (including, but not limited to, incidental or consequential damages for lost profits, lost sales, injury to person or property, or any other incidental or consequential loss) shall be available. Any action for breach of warranty must be brought within two (2) years of the date of sale.

GRACO MAKES NO WARRANTY, AND DISCLAIMS ALL IMPLIED WARRANTIES OF MERCHANTABILITY AND FITNESS FOR A PARTICULAR PURPOSE, IN CONNECTION WITH ACCESSORIES, EQUIPMENT, MATERIALS OR COMPONENTS SOLD BUT NOT MANUFACTURED BY GRACO. These items sold, but not manufactured by Graco (such as electric motors, switches, hose, etc.), are subject to the warranty, if any, of their manufacturer. Graco will provide purchaser with reasonable assistance in making any claim for breach of these warranties.

In no event will Graco be liable for indirect, incidental, special or consequential damages resulting from Graco supplying equipment hereunder, or the furnishing, performance, or use of any products or other goods sold hereto, whether due to a breach of contract, breach of warranty, the negligence of Graco, or otherwise.

FOR GRACO CANADA CUSTOMERS

The Parties acknowledge that they have required that the present document, as well as all documents, notices and legal proceedings entered into, given or instituted pursuant hereto or relating directly or indirectly hereto, be drawn up in English. Les parties reconnaissent avoir convenu que la rédaction du présente document sera en Anglais, ainsi que tous documents, avis et procédures judiciaires exécutés, donnés ou intentés, à la suite de ou en rapport, directement ou indirectement, avec les procédures concernées.

ADDITIONAL WARRANTY COVERAGE

Graco does provide extended warranty and wear warranty for products described in the "Graco Contractor Equipment Warranty Program".

TO PLACE AN ORDER, contact your Graco distributor or call **1-800-690-2894** to identify the nearest distributor.

*All written and visual data contained in this document reflects the latest product information available at the time of publication.
Graco reserves the right to make changes at any time without notice.*

MM 309907

This manual contains English

Graco Headquarters: Minneapolis
International Offices: Belgium, China, Japan, Korea
GRACO INC. P.O. BOX 1441 MINNEAPOLIS, MN 55440-1441
www.graco.com
11/2005, Rev 9/2006