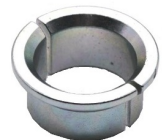




Atomex D1800 430cc Stainless Steel Fluid Pump

\$8,812.64
INCL. GST

Product Images





Short Description

Atomex D1800 430cc Stainless Steel fluid section is the ideal truck mounted paint pump for road marking in Australia. Designed for use with the Graco Viscount II Hydraulic Motor it includes nut collar and adaptor rod.

Description

The Atomex D1800 430cc Stainless Steel fluid pump has a large displacement of paint and are ideal for line marking truck applications where large tip sizes may be used with multiple guns for simultaneous spraying.

The D1800 pump includes nut collar coupling, collars and adaptor rod that will connect to the bottom of the Graco Viscount II Hydraulic motor.

Atomex D1800 Fluid Pumps Feature –

- Stainless steel
- UHMPWE/LTHR packing seals
- Positive displacement with 2 balls provides uniform paint delivery
- Improved serviceability with fewer parts and faster repairs

We have sold many of these pumps over the last decade to a number of large road line marking companies around Australia which have equalled and in many cases outlasted Graco fluid sections.

The Atomex D1800 pump is a cost effective solution for truck mounted line marking pumps and we hold all spare parts in stock.

Contact our office for a better price on your next road marking truck pump. We deliver Australia wide.

Atomex Part No. AX/G222-805

Replaces Graco Part No. 222805

Additional Information

Brands	Atomex
--------	--------

