



Binks 0115-010015 Spool & Sleeve Assembly

\$135.30
INCL. GST

Product Images



Short Description

Binks 0115-010015 Spool & Sleeve Assembly is used on Binks AX85S Air Motor with MX432 & MXL432 airless sprayers. Spool and valve assembly is a matched set and should not be interchanged with other spool and sleeve assemblies.

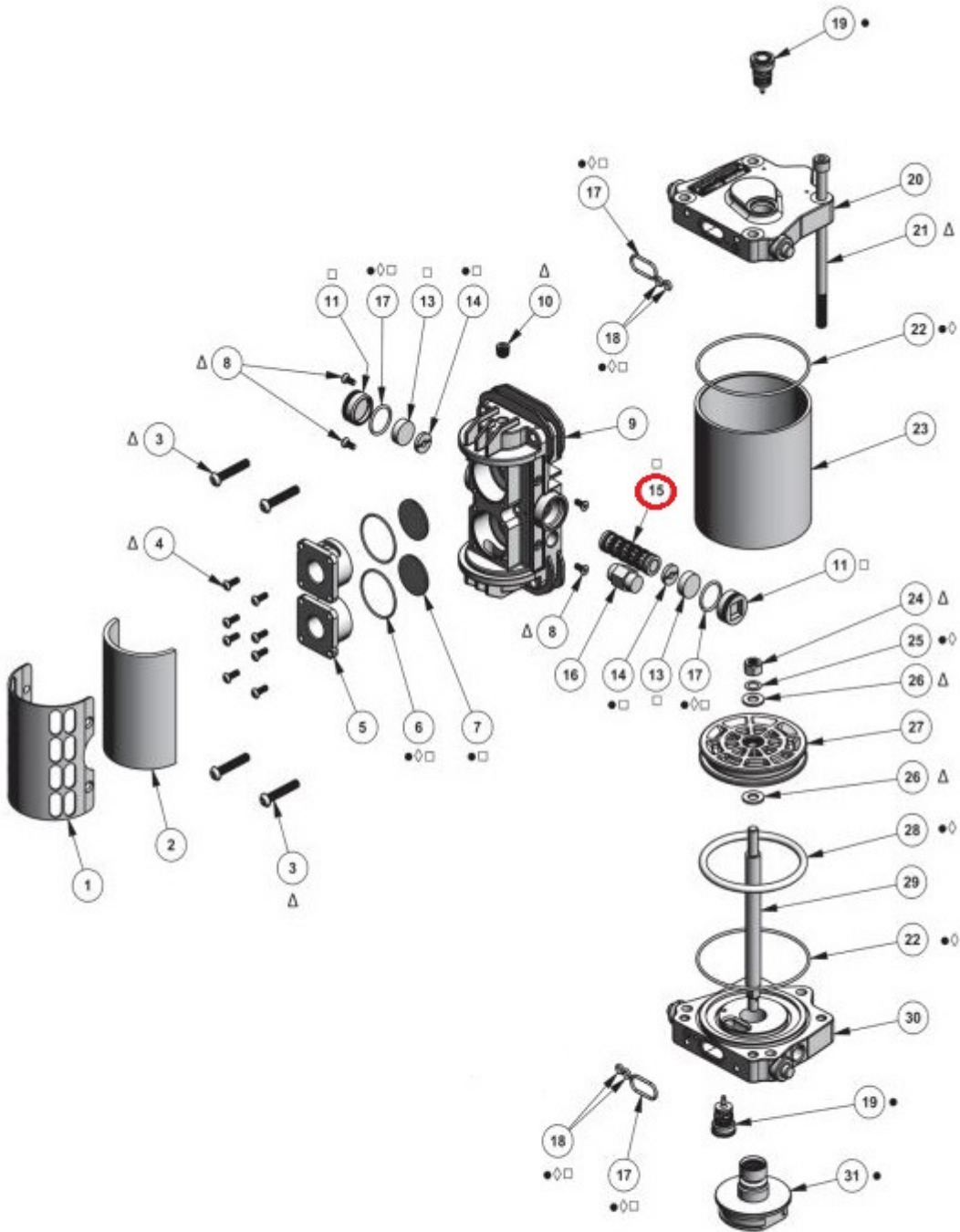
Description

Binks 0115-010015 Spool & Sleeve Assembly is used on Binks [AX85S](#) Air Motor with MX432 & MXL432 airless sprayers. Spool and valve assembly is a matched set and should not be interchanged with other spool and sleeve assemblies.

Do not use metallic tools to remove or refit the spool & valve assembly, use a plastic, nylon or timber drift for extraction or insertion. When inserting the valve into the spool do not force it, it only requires gentle pressure on the valve to get it in.

Binks 0115-010015 Spool & Sleeve Assembly is used on the following models -

- Binks MX432 Airless Sprayer
- Binks MXL432 Airless Sprayer



- Parts are included in 0115-010215 AX85 Repair Kit.
- ◇ Parts are included in 0115-010217 AX85 Seal Kit.
- Parts are included in 0115-010226 Air Motor Valve Repair Kit.

Special Notes -

- Read manual before attempting to fit this item
- This item is non-returnable

Binks Part No. 0115-010015

[Click here to see the full range of Binks MXL432 spare parts](#)

Additional Information

Brands	Binks
Equipment Type	Airless Sprayers
Machine Type	Pneumatic
Machine Model Number	MX432, MXL432
OEM	Original Part

