



Airlessco 866428 Prime Relief Valve

\$225.50
INCL. GST

Product Images



Short Description

Airlessco 866428 Prime Relief Valve Assembly will suit all "Little Pro" model airless sprayers, old model SL810 and SL1100 airless sprayers. Valve assembly includes adapter, drain valve, cam, handle and pin.

Description

Airlessco 866428 Prime Relief Valve Assembly will suit all "Little Pro" model airless sprayers, old model SL810 and SL1100 airless sprayers. Valve assembly includes adapter, drain valve, cam, handle and pin.

Airlessco 866428 Prime Relief Valve Assembly replaces Airlessco Part No. 100-180 Drain Valve.

This valve is not suitable for new model SL1100 produced from 2014 onwards, use [Graco Part No. 245103](#).

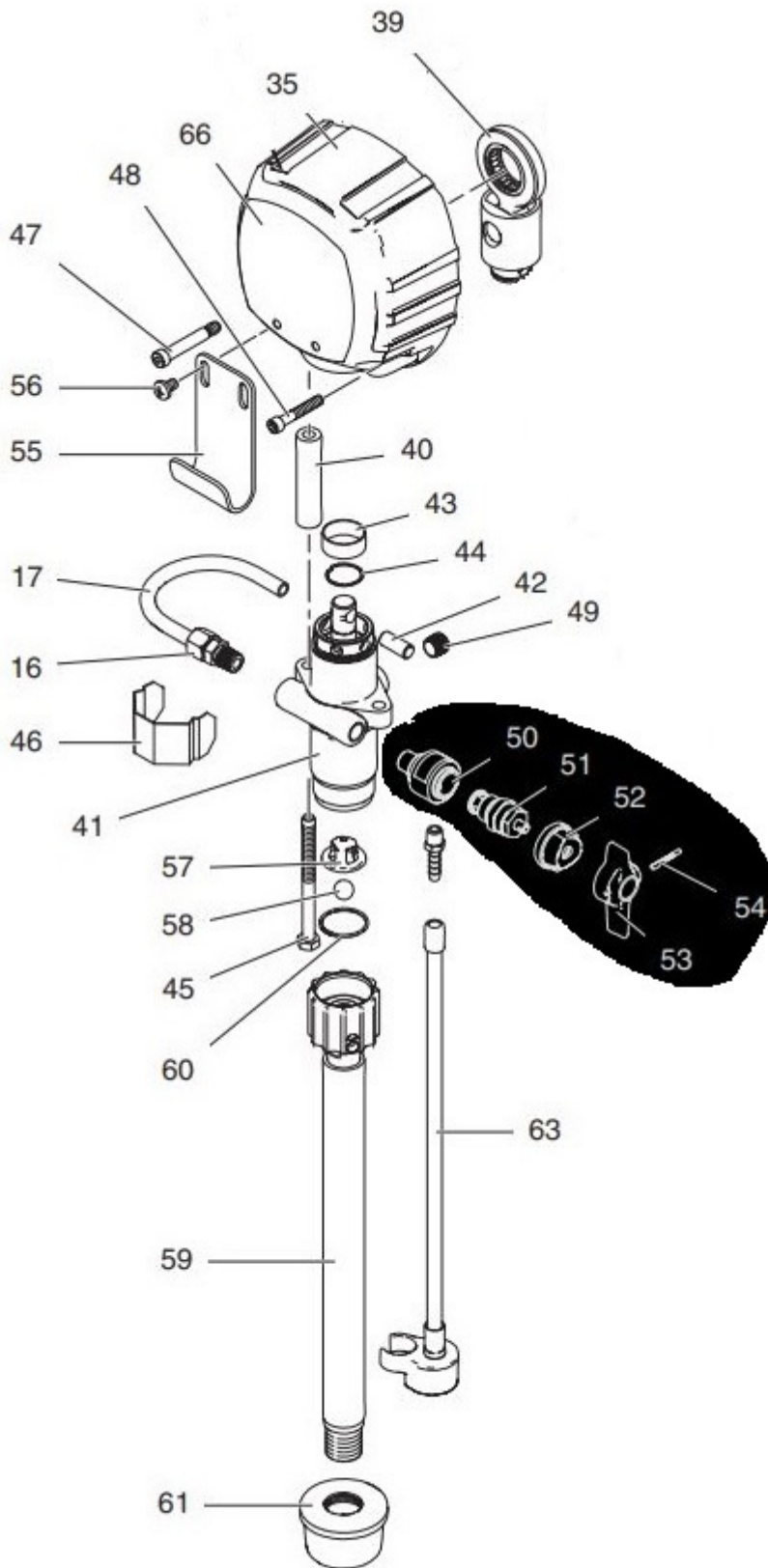
Suits LP New Models Produced after 2014 -

- **MP400 Manual** (Part No. 868056)
- **LP400 Manual** (Part No. 16M389)
- **LP500 Manual** (Part No. 16M390, 16M391)
- **LP600 Manual** (Part No. 16M392, 16M393)

Suits LP Old Models Produced before 2012 -

- **LP2400 Manual** (1999-2006)
- **LP2500 Manual** (1999-2006)
- **LP2600 Manual** (1999-2006)
- **LP400 Manual** (mechanical pressure control)
- **LP400 Manual** (2006 - 2012)
- **LP460 Manual** (2006 - 2012)
- **LP540 Manual** (2006 - 2012)
- **LP690 Manual** (2006 - 2012)
- **SL810 Manual** (2006-2012)
- **SL1100 Manual** (2006-2012)

Item location shown on LP500



Airlessco 866428 Prime Relief Valve Includes-

- Item 50 - 865013 Adapter, Valve (Not available for order)
- Item 51 - 239913 Valve Drain
- Item 52 - 867102 Cam, Priming Valve
- Item 53 - 867263 Handle, Priming Valve

- Item 54 - 867404 Pin, Grooved

Airlessco Part No. 866428

Replaces Airlessco Part No. 100-180

[Visit our product download centre for manuals & spare parts](#)

Additional Information

Brands	Airlessco
Equipment Type	Airless Sprayers
Machine Type	Electric 240V
Machine Model Number	MP400, LP400 (Late Model), LP500, LP600, LP2400, LP2500, LP2600, LP400 (Mechanical Pressure), LP400 (Old Model), LP460, LP540, LP690, SL810, SL1100 (Old Model)
OEM	Original Part

